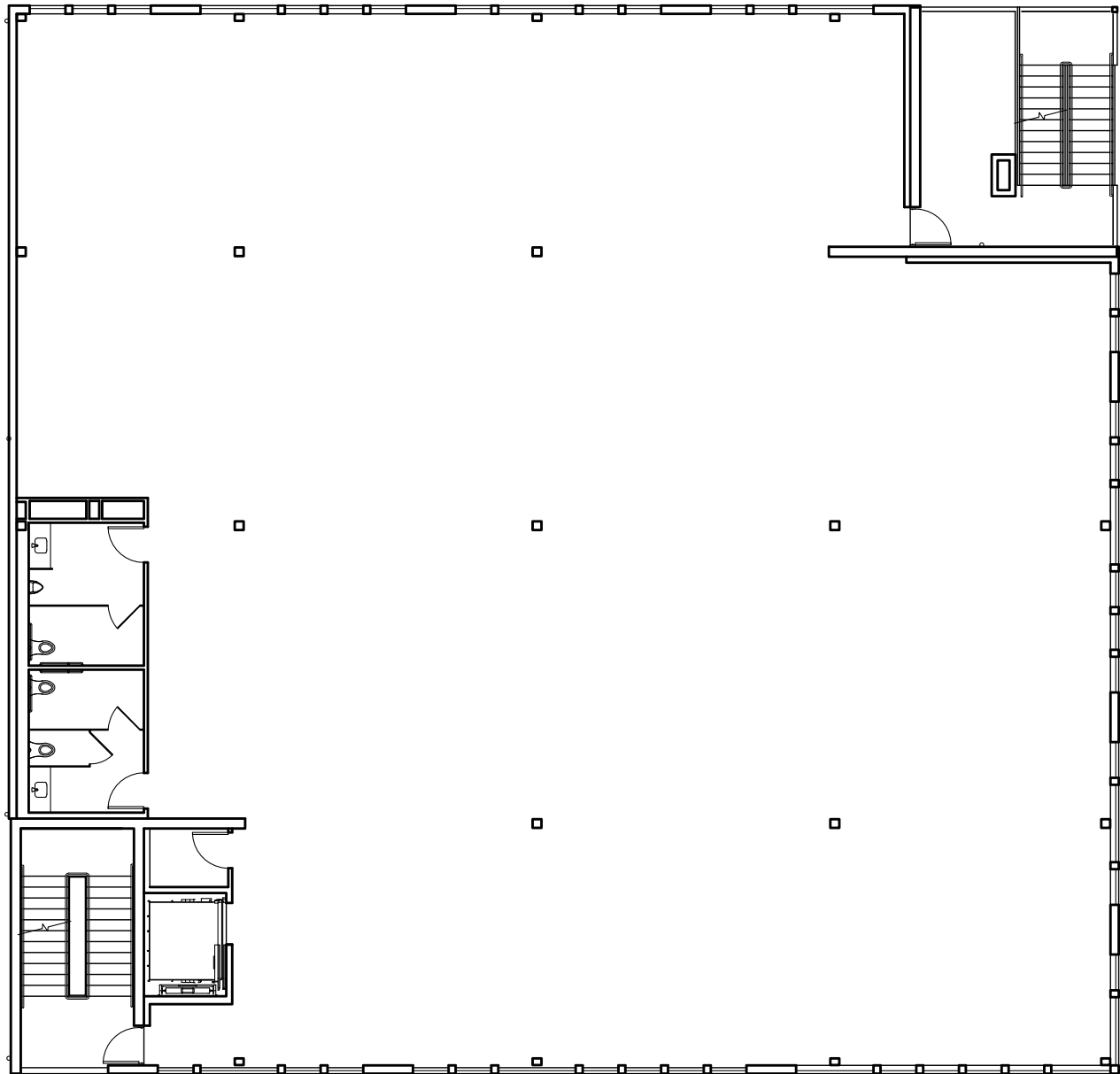




FLOOR 3
9,232
SQUARE FEET



5101 14th Ave NW | Seattle, WA 98117

tommerbuilding.com



Tim Jones
+1 206 971 7011
tim.jones@am.jll.com

jll.com/seattle

DISCLAIMER © 2019 Jones Lang LaSalle IP, Inc. All rights reserved. All information contained herein is from sources deemed reliable; however, no representation or warranty is made to the accuracy thereof. Jones Lang LaSalle Brokerage, Inc.